

Quick Start AbleTrend 7.0 (Updated 3/14/2018)

1. Once the software is installed, open the AbleTrend software and you will see the login screen. Enter your email address, password, and product serial number (*you will find your product serial number in your order confirmation email*)

Login

AbleSys

Full e-mail Address: support@ablesys.com

Password, same as Ablesys.com login: ••••

Product Serial No: 99999

Save Passwords (If this is checked, both passwords will be saved. If this is unchecked, both saved passwords will be cleared).

Advanced Ok Cancel

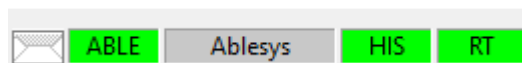
Data Feed

Choose your module: AbleData

Username:

Password:

2. Data Feed Setup: We recommend first time users to use the AbleData connection, which is selected by default when you open the software. You may leave the Username and Password fields blank.
3. Click OK to log-in to the software. You should see three green boxes in the lower right corner: ABLE, HIS, and RT.



4. Click Ok to let the preloaded workspaces to populate:

AbleTrend 7.51 New Session Setup

Start new session with last session's workspace

Open workspace from disk

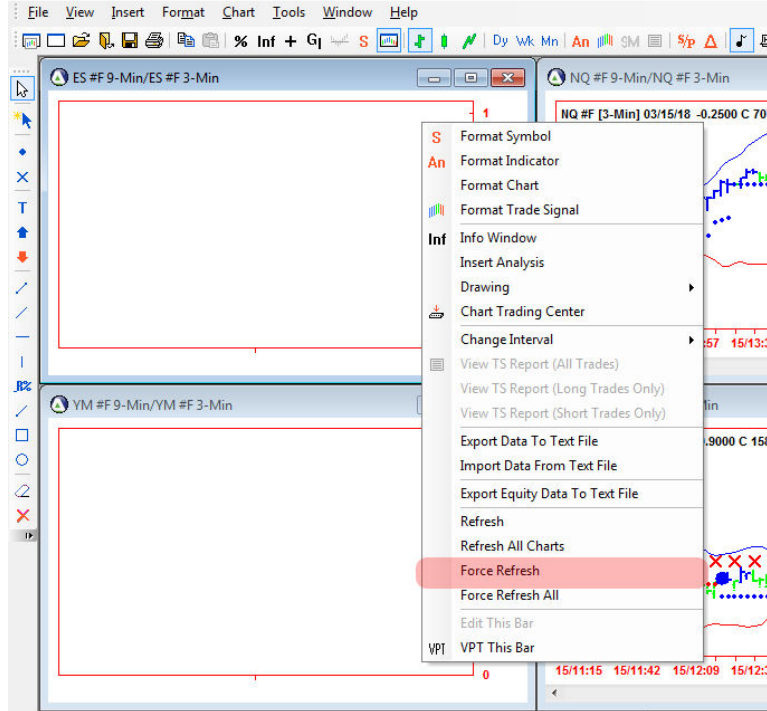
Create new workspace

Exit eAscTrend

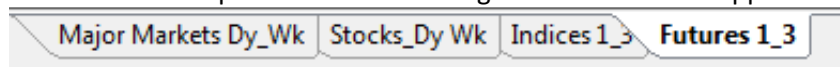
Auto start in 10 seconds

Ok Cancel

- If there are windows that timed out or failed to populate, you can try right clicking on the window and clicking force refresh to reload the chart:



- You'll see the active workspaces in the tabs along the bottom of the application



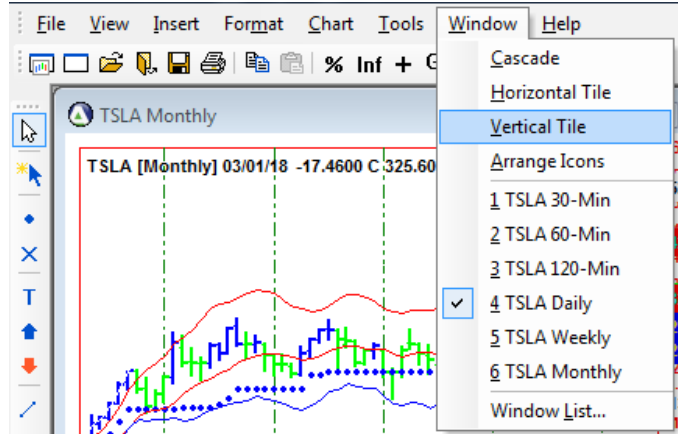
These workspaces are provided as a starting point to using AbleTrend.

The Included Sample Workspaces


- Major Markets Dy_Wk
 - This workspace features the Daily/Weekly Guidance chart for the major indices, as well as Treasury Bond futures, Gold futures, Crude Oil futures, and the Dollar Index
 - A dashboard like this can help you to see what is happening in some of the major markets and you can add to it up to 16 charts
- Stocks_Dy_Wk
 - This workspace features the same Daily/Weekly Guidance, and can be used to stay on top of your portfolio holdings at a glance.
 - Maximize individual charts to get a larger view, or load another workspace to get details
- AAPL_Swing
 - This workspace features all the time frames that might be relevant for this symbol
 - Use this workspace as a template and 'Save As' to reuse the template
- Indices 1_3
 - This workspace features our 1 min/3 min Guidance configuration for day trading
- Futures 1_3
 - This workspace features the same 1 min/3 min Guidance for E-minis and Futures

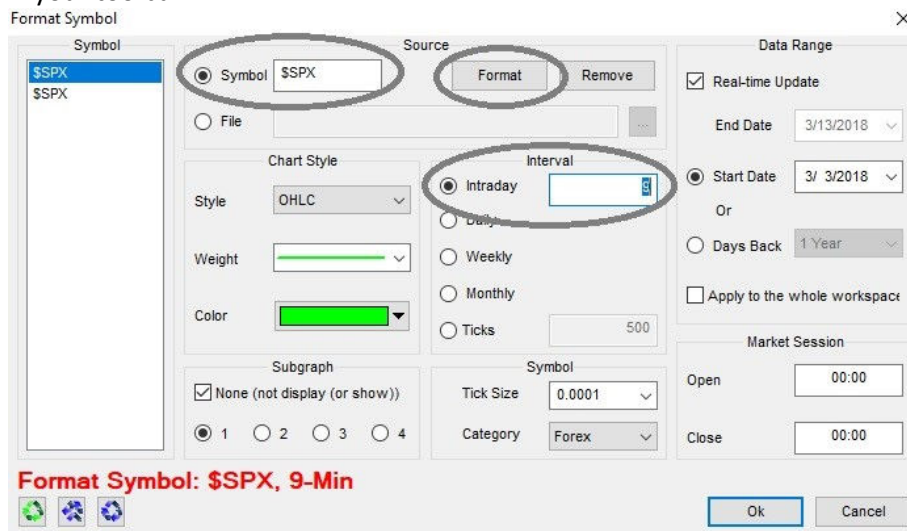
Modifying the Workspaces

1. Filling out your screen: The workspace templates may be saved to a different screen resolution than your own. To resize the charts in the workspace to fill your screen, click **Window** up at the top of the application & select **Vertical Tile**

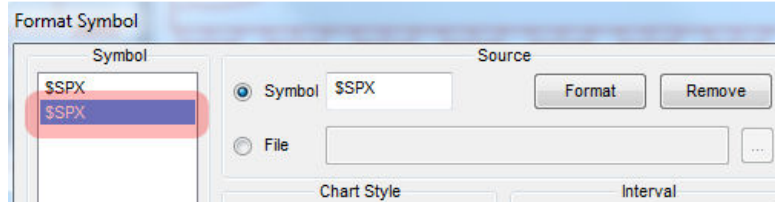


2. Changing Symbols & Time Frames

- For the selected chart, **right click** and then click **Format Symbol** or click the  icon on your toolbar:

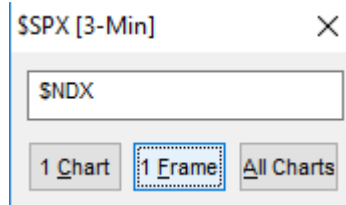


- Our sample workspaces are configured as **Guidance Charts**, which uses two time frames e.g. \$SPX is listed twice in the image above. *(The longer time frame is listed first)*
- To change the chart, we need to change both **Sources**
 - First click **Format**, then you can input a new Symbol or Interval
 - Then click **Format** again to save the change
- Next, select the second 'Symbol' in the left column to change the second time frame:



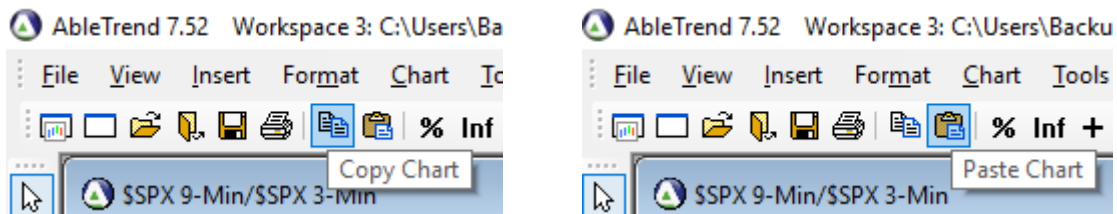
3. A Short Cut for Changing Symbols

- With a chart selected, you can make changes for symbols just by typing. As you type, a box will appear



- For **Guidance Charts**, click “1 Frame” in order to change both sources together

4. Adding Charts to your Workspace: You can load up to 16 charts in one workspace. The easiest method is to use an existing chart as a template by copy & pasting, and then changing the symbol or time frame



(Click Window > Vertical tile to realign the charts to fill out your screen)

Connecting Real-time Streaming Data

These instructions get you started, using the AbleData connection, which provides streaming data for stocks, futures, and forex on a 15-min delay. Real-time data connections are available through eSignal & broker supported connections

If you have any questions or would like to request assistance with workspace configuration, please contact us at support@ablesys.com