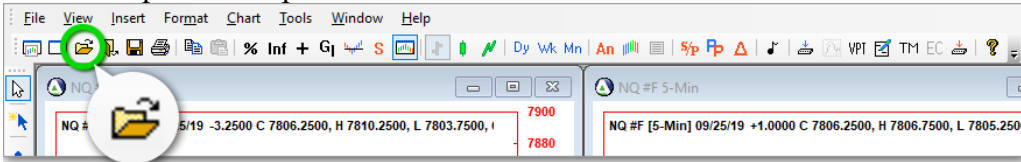


Instructions for AbleTrend Portfolio Performance (10/18/2019)

A portfolio in trading means a combination of many stocks, futures, forex, bonds etc. AbleTrend Portfolio Performance (APP) uses a workspace as a portfolio, and auto setup the 100% mechanical trading parameters for each symbol with one click.

1. Setup a Portfolio Workspace

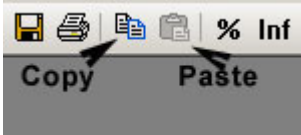
A quick way to setup a portfolio: Simply open pre-built workspace named Portfolio1. Go to File > Open Workspace > Select Portfolio1...



2. Change symbols for the portfolio

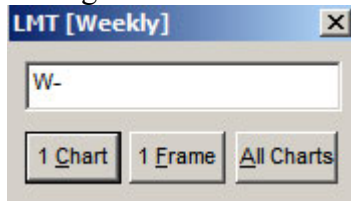
Click any chart, then type (press keys) the symbol, the input window will pop up, you input the symbol, such as WMT...then press "1 Chart".

To add additional symbols, simply use Copy & Paste button to copy and paste charts, then change the symbols.



3. Change time intervals for all charts

To change intervals for all charts, directly press D- for daily, or W- for weekly or M- for monthly, then click “All Charts”. We suggest using longer time intervals for position trading.



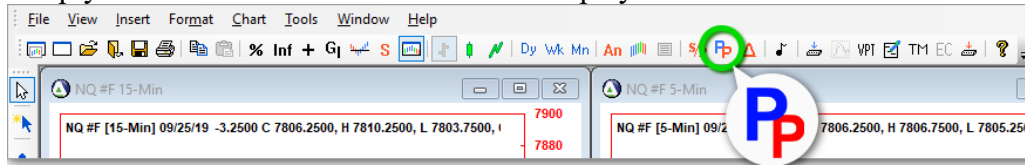
The longer time interval, the higher accuracy. Please try weekly and monthly charts

4. Add trading a trading strategy system to a chart

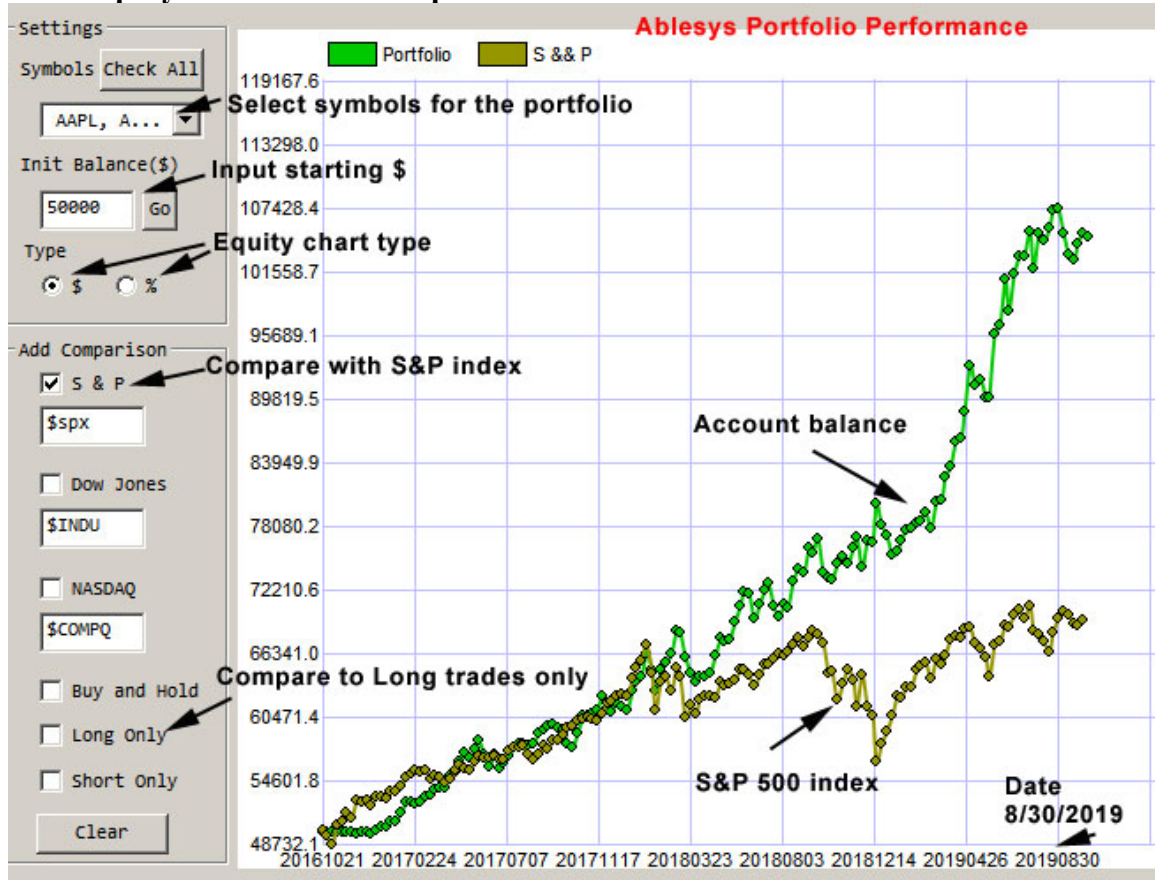
The pre-built workspace already has AbleTrend TS trading strategy system added to each chart. Portfolio Performance uses the AbleTrend TS signal results to

5. Run Auto Setup for the optimized parameters

Simply Click the “PP” icon to show APP display window.



6. View Equity Line Chart of the portfolio



Here:

Symbols – You may select which symbol included in the portfolio, and see performance of each symbol when you only check one symbol ...

Init Balance (\$) – Setup starting account balance in \$ amount

Type – Equity Line (EL) type in \$ or % percentage

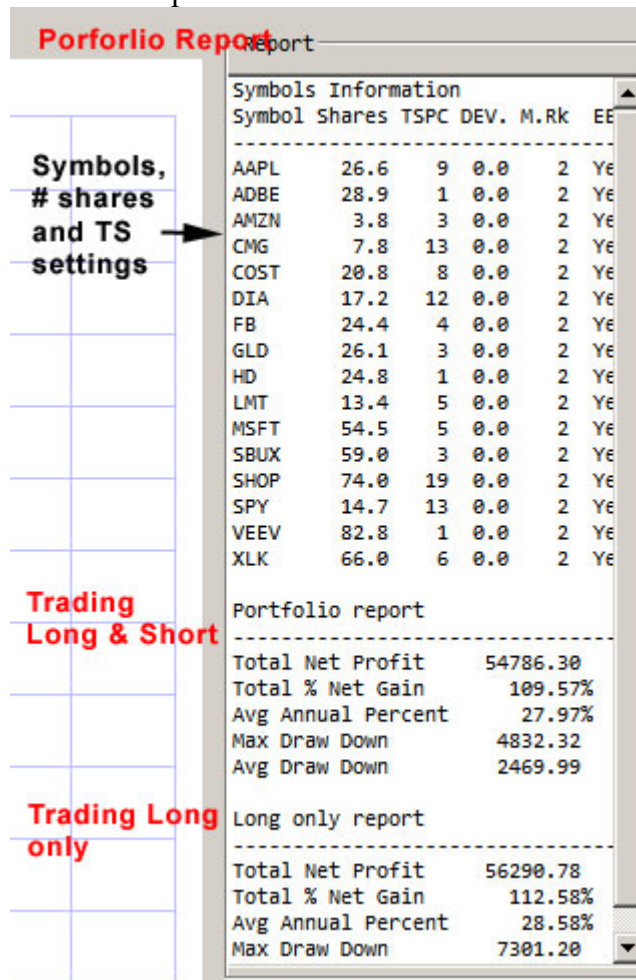
Add Comparison – You may compare with S&P 500 Index, Dow Jones Index, Nasdaq Index, Buy & Hold, Long trades only, Short trades only.

Clear Button – Clear all added curves by one click, only show portfolio EL alone

Point mouse to the EL curve – Show the details of Date, specific P/L numbers

7. View Back Testing Report of the Portfolio

On the right side you may see back testing report for the portfolio. If you make any change for charts, the equity line chart and back testing report will change accordingly. See an example below.



Here:

Shares - # of shares for each symbol

TSPC – TSPC of the AbleTrendTS

DEV. – Deviation of the AbleTrendTS

M.Rk – MoneyRisk of the AbleTrendTS

EBC – Entry at Bar Close of the AbleTrendTS, Yes or No setting

8. Export:

Both equity line chart and back testing report can be exported to a text file, and the data can be used by Microsoft's Excel software to give a better presentation.