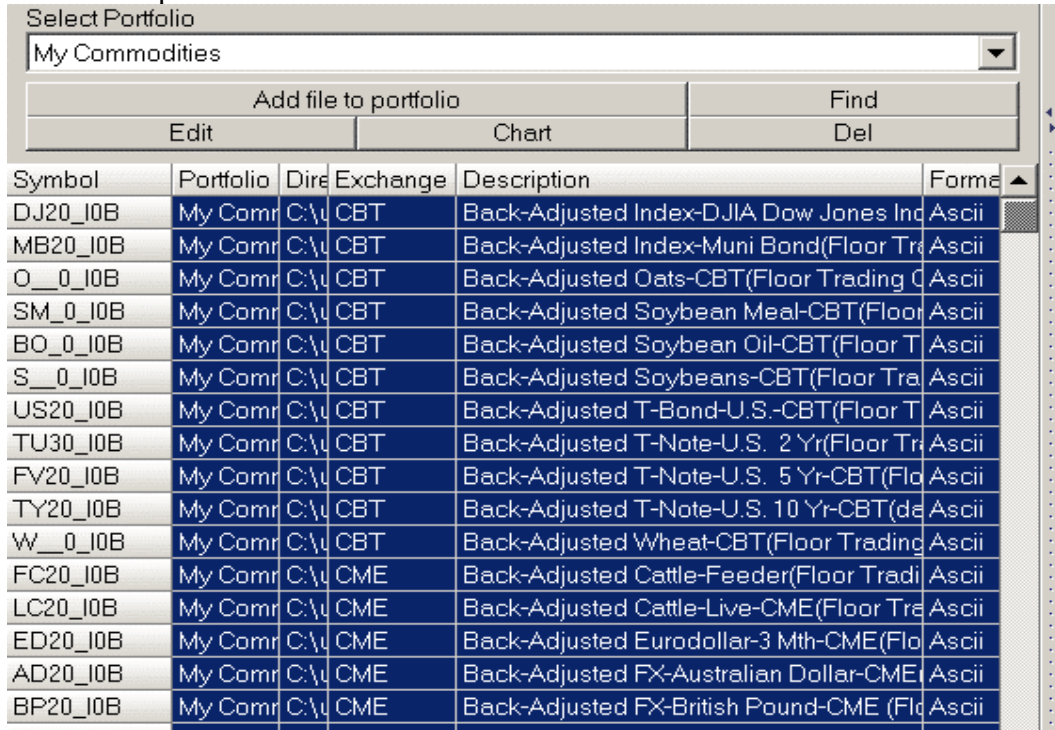
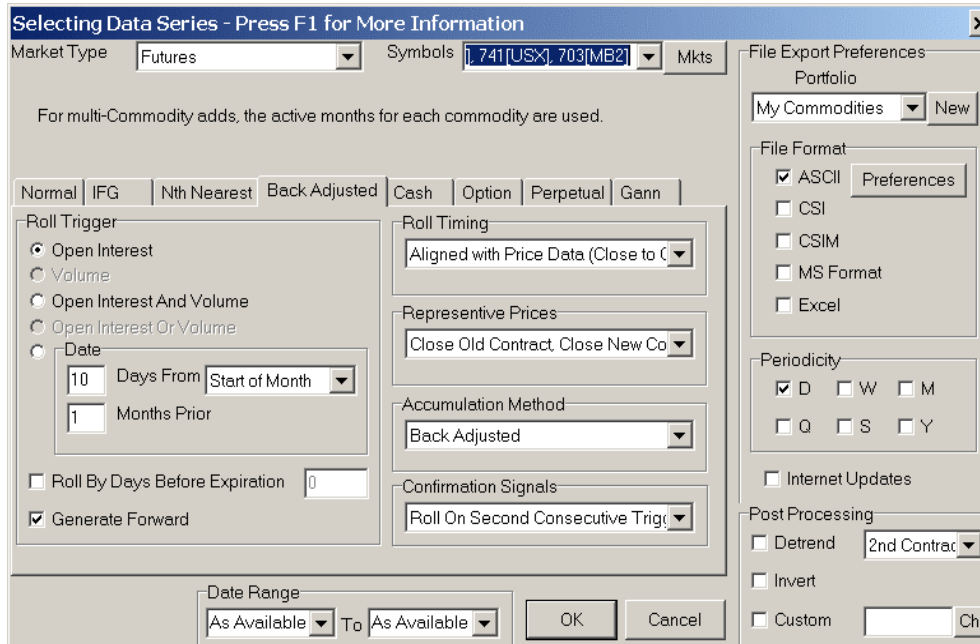


Using CSI EOD data with eASCTrend (Updated 2/14/2006)

1. Open “UA” software of CSI
2. Setup ASCII files: click “Add files to portfolio”
3. Choose the portfolio



4. Select your market symbols (by highlighting the symbols, see above)
5. Choose File Format as “ASCII”



- Click “References” > Edit Portfolio Options > ASCII Field Layout > Input “DNOHLCV”, also check “Form Column”

Name: My Commodities

Directory: C:\ua\Files\My Commodities\

Layout as: DNOHLCV Form Columns

Warning, D can only be preceded by ASEZP

Please choose from the following:

D for Date	O for Open	v for Contract Volume
N for Delivery Month Number	H for High	V for Total Volume
A for Delivery Month Letter	L for Low	i for Contract Open Interest
S for Symbol	C for Close	I for Total Open Interest
E for Exchange	\$ for Cash	U for Unadjusted Close
Z for Contract Size	B for Closing Bid	W for Unadjusted Volume
P for Point Value	K for Closing Ask	j for Unadjusted Open Inter
t for Integer Strike		
T for Converted Strike		

- Click “ASCII File Names”, check box “txt”

Name: My Commodities

Directory: C:\ua\Files\My Commodities\

Name By: SCYA

Warning, these settings only apply to actual futures contracts. Stocks and synthetic series are named according to the symbol for that series. The file name is assembled out of the fields specified. For example, SCYA means Symbol (S) followed by Century (C) followed by Year (Y) followed by Delivery Month (A).

Please choose from the following:

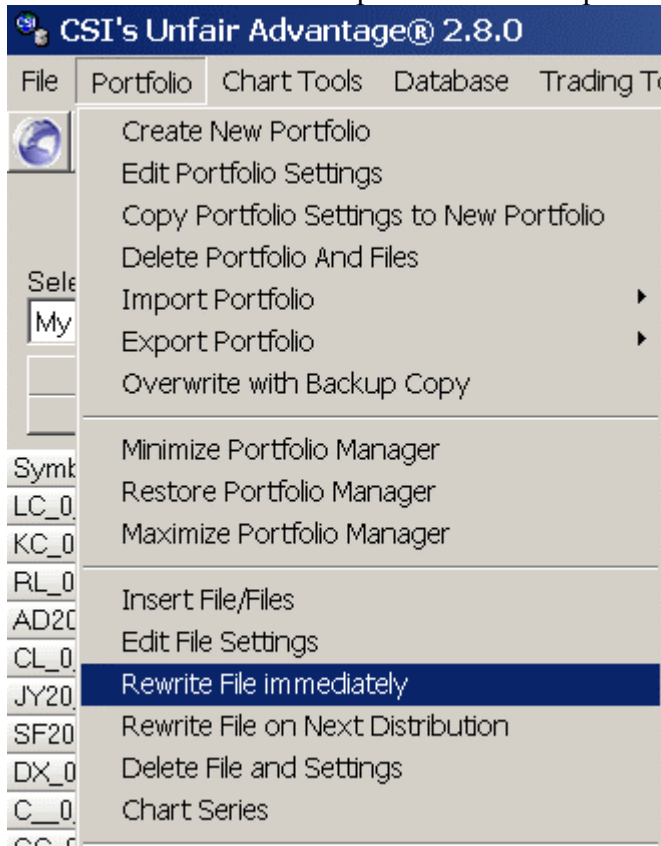
S for Symbol	C for Century (19 or 20)
E for Exchange	Y for Year (i.e. 92)
Z for Name	N for Delivery Month Number
. for Extension	A for Delivery Month Letter
P for Period (DWM)	F for Fixed 12 Char Symbol

Force extension:

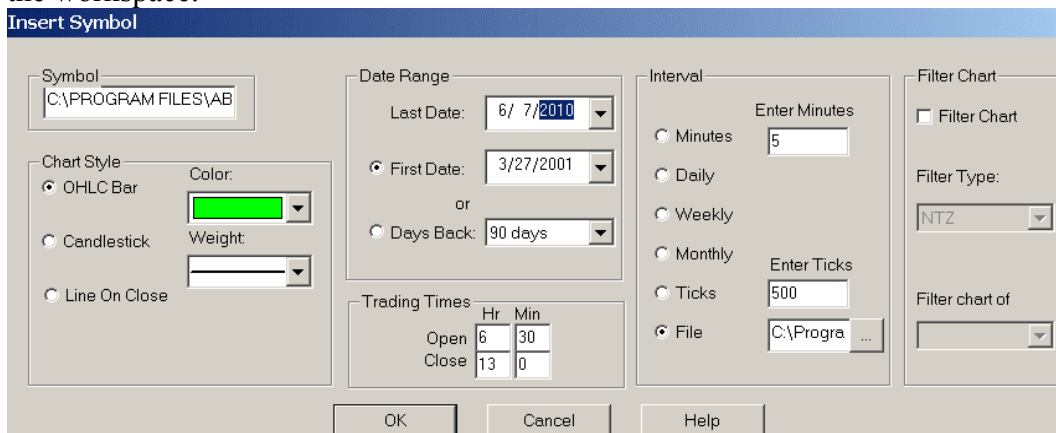
.prn

.txt

8. For futures, select “Back Adjusted” and use its default settings
See #6, above
9. Click “OK” to add the file and continue to output the file...
10. The ASCII files will be output to the default portfolio folders of CSI data.



11. Now you may import the ASCII data from the files to charts... See detailed information from the software’s online Help > Index > ASCII > ASCII Data Files...
12. After you are done for the chart and workspace, make sure to set the last date of the chart to 5 year later. For example, if today was 6/7/2005, then you input the last date as 6/7/2010. This chart will be updated in next 5 years. You need save the workspace.



13. Each day after you download the CSI data, when you open the workspaces, it will update the chart to the date.